



Ceiling Material Information

The ceiling is an often-overlooked surface in the cleaning environment primarily because of the perception that ceilings are too difficult or impossible to clean. Some building managers have been misinformed that simply painting the ceiling is faster and easier than any cleaning process. A basic understanding of the ceiling surfaces fire rating, acoustic value and cost comparison is critical for deciding the best technique for restoring the "clean" look to the surface.

Most ceilings (commercial and residential) fall into one of several categories.

Acoustic - This ceiling type is the most common found in commercial buildings, most office areas and many residential basements. It is porous and basically appears smooth with small pinholes and crevices. The primary function of all acoustical tiles is for sound control and fire resistance. There are however, many types of acoustical tiles, each with unique functions.



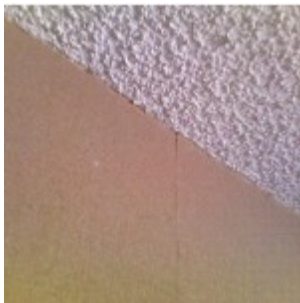
Multi-functional integrated system - This system combines into a single assembly all the necessary provisions for room lighting, air distribution, and acoustical



control. All components - mechanical, electrical, and structural - are blended together to create a unified visual effect. This design reduces above ceiling congestion.



Glacier - This ceiling is constructed of acoustical ceiling material. However, it looks much like icicles. Glacier ceilings must be sprayed with ceiling cleaning solution from four different directions to assure complete coverage of the surface.



Popcorn - This ceiling is sprayed onto a previously existing non-acoustical type ceiling already in existence. The result is a stucco-like surface. The disadvantage of this system is that if a stain occurs, there is no tile to replace it.

Burlap – Although rarely used burlap is very similar to acoustical ceilings. However, it has a greater tendency to absorb dirt directly into the fiber and has an increased risk regarding fire resistant values.



Sheetrock - This is normal sheetrock or wallboard painted with enamel, latex or flat paint. The enamel and latex paints allow the spray/wipe technique to be used. Flat paint ceilings should be repainted when they become soiled since the flat paint can be removed with mild agitation or detergents.



We clean all types of ceilings

Repair and restoration is also available

Grid Capping Repairs

If your grid system (the parts that hold up your tiles) is rusted or the paint is peeling it can be re-painted or covered with grid capping. Grid capping is made of a durable vinyl, is white, easy to clean, never rust or peels and is easily installed.

Call a NanoVations Inc. representative for a free evaluation 403-605-4177

